



STORMSHIELD

# SN-L-SERIES

2200/3200

**Up to 116 Gbps**

FIREWALL PERFORMANCE

**Up to 34.9 Gbps**

VPN PERFORMANCE

**Enhanced security**

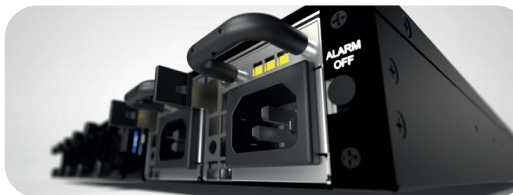
VPN CONCENTRATOR

NETWORK SECURITY



# POWER

## FOR COMPLEX INFRASTRUCTURES



### High-performance adaptability

Boost your platform as you grow simply by changing your licence. The SN-L-Series platform enables you to anticipate your performance needs with confidence.

### Modularity and network connectivity

Our network extension capabilities give you maximum flexibility of configuration. Modular copper and fibre interface options support you as your infrastructure evolves.

### Hardened VPN Concentrator

The implementation of intrusion prevention on data passing through IPSec VPN tunnels strengthens the protection of secure communications.

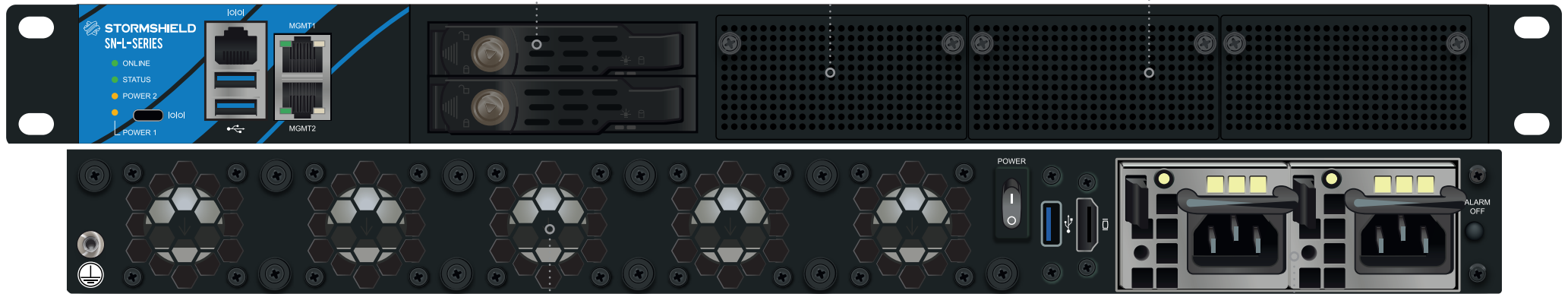
## FOR EUROPEAN CYBERSECURITY

When you choose Stormshield, you gain true strategic independence and peace of mind in a highly charged geopolitical context. Completely developed in France, our firmware has received certification from leading European cybersecurity agencies such as ANSSI (France) and CCN (Spain), as well as Standard Qualification.

**Hot-swappable SSD disks**  
for log storage and backups

Connectivity  
**24 fiber**  
interfaces

**3 extensions**  
Copper and fiber modularity  
(1Gb/10Gb)



Hot-swappable  
**fans**

Hot-swappable  
**redundant power supply**

# ESSENTIAL DATA



Copper connectivity

**2 to 26**

Interfaces 100/1000/2500



Fiber connectivity

**Up to 3**

Extension slots

SN-L-Series

**2200**



License  
update



SN-L-Series

**3200**



Performance

**115 Gbps**

Firewall



Performance

**116 Gbps**

Firewall



VPN

**23.7 Gbps**

IPsec throughput



VPN

**34.9 Gbps**

IPsec throughput



# FEATURES

**Non-contractual document.** The features mentioned are for version 4.x.

## Hardened VPN Concentrator

The implementation of intrusion prevention on data passing through IPSec VPN tunnels strengthens the **protection of secure communications**.

## Resilient complex infrastructures

LACP, MSTP/RSTP, high availability and redundant power supply ensure **resilience for complex architecture**.

## Connectivity and network modularity

The three network expansion slots provide a mix of **copper and fiber network interfaces**, adapting perfectly to your infrastructure.

## ... and unique firmware

Stormshield offers a unique, ergonomic interface for managing its products range. This **reduces operating costs, facilitates the management** of IT teams and **saves time** for the company.

## And more features

### Usage control

Firewall/IPS/IDS mode • Identity-based firewall • Application detection and management • Microsoft Services Firewall • Industrial firewall/IPS/IDS • Industrial application control • Detection and control of the use of mobile terminals • Geolocation (countries, continents) • Dynamic Host Reputation • URL filtering (embedded database or cloud mode) • Transparent authentication (Active Directory, SSO Agent, SSL) • Agent-based multi-user VDI authentication (Citrix, TSE) • Guest and sponsorship mode authentication, webservices • Host Checker • Zero Trust Network Access (ZTNA)

### Protection from threats

Intrusion detection and prevention • Protocols autodetection and compliancy check • Application inspection • Protection from denial of service attacks (DoS) • Protection from SQL injections • Protection from Cross-Site Scripting (XSS) • Protection from malicious Web2.0 code and scripts (Clean & Pass) • Trojan detection • Detection of interactive connections (botnets, Command & Control) • Protection from data evasion • Advanced management of fragmentation • Automatic reaction to attack (notification, quarantine, block, QOS, dump) • Antispam and antiphishing: reputation-based analysis, heuristic engine • Embedded antivirus (HTTP, SMTP, POP3, FTP) • SSL decryption and inspection • VoIP protection (SIP) • Collaborative security: IP reputation, Cloud based Sandbox on the European territory (option)

### Confidentiality

Site-to-site or nomad IPSec VPN • Post Quantum Resistant • Remote SSL VPN access in multi-OS tunnel mode (Windows, Android, iOS, etc.) • SSL VPN agent with automatic configuration (Windows) • Support for Android/iPhone IPSec VPN

### Network - Integration

IPv6 • NAT, PAT, transparent (bridge)/routed/hybrid modes • Dynamic routing (RIP - OSPF - BGP) • Multicast • Multiple link management (balancing, failover) • Multi-level internal or external PKI management • Multi-domain authentication (including internal LDAP) • Policy-based routing (PBR) • QoS management • DHCP client/relay/server • NTP client • DNS proxy-cache • HTTP proxy • Aggregate links (LACP, Broadcast Mode and Redundancy) • Spanning-tree management (RSTP/MSTP) • SD-WAN, Multifactor Authentication (MFA)

### Management

Web-based management • Interface with privacy mode (GDPR compliancy) • Object-oriented security policy • Contextual security policy • Real-time configuration helper • Rule counter • Connected or disconnected security updates • Global/local security policy • Embedded log reporting and analysis tools • Interactive and customizable reports • Support for multiple syslog server UDP/TCP/TLS • SNMP v2, v3 agent • IPFIX • Automated configuration backup • External storage (option) • Open API • Script recording • High availability.

# TECHNICAL SPECIFICATIONS

PERFORMANCE <sup>1</sup>	2200	3200
Firewall throughput (1518 bytes UDP)	<b>115 Gbps</b>	<b>116 Gbps</b>
Firewall throughput (IMIX)	<b>32.8 Gbps</b>	<b>50.9 Gbps</b>
IPS throughput (1518 bytes UDP)	<b>53.1 Gbps</b>	<b>83.1 Gbps</b>
IPS throughput (IMIX)	<b>14.3 Gbps</b>	<b>22.7 Gbps</b>
Threat protection*	<b>6.6 Gbps</b>	<b>10.8 Gbps</b>

\* Threat protection is measured with firewall, IPS, antivirus, IP reputation, and web application security enabled, using a realistic traffic mix, and with logging enabled.

VPN	2200	3200
IPsec throughput - AES-GCM (1408 byte UDP)	<b>23.7 Gbps</b>	<b>34.9 Gbps</b>
IPsec throughput - AES-GCM (IMIX)	<b>12.9 Gbps</b>	<b>20.9 Gbps</b>
Nb of IPsec VPN tunnels (1024 kbps per tunnel)	<b>6,900</b>	<b>10,000</b>
Nb of SSL VPN clients	<b>2,400</b>	<b>4,000</b>

NETWORK CONNECTIVITY	2200	3200
Max number of simultaneous sessions	<b>5,000,000</b>	<b>7,000,000</b>
Nb of new sessions/sec.	<b>300,000</b>	<b>330,000</b>
Nb of main gateways (max)/backup (max)	<b>64/64</b>	<b>64/64</b>

CONNECTIVITY	2200	3200
Copper interfaces 10/100/1000/2500	<b>2-26</b>	<b>2-26</b>
Copper interfaces 10 Gb	<b>0-12</b>	<b>0-12</b>
Fiber interfaces 1 Gb	<b>0-24</b>	<b>0-24</b>
Fiber interfaces 10 Gb (dual speed)	<b>0-12</b>	<b>0-12</b>
Fiber interfaces 40 Gb	<b>0-6</b>	<b>0-6</b>
Slot for extension modules	<b>3</b>	<b>3</b>

SYSTEM	2200	3200
Nb of filtering rules (recommended/specific config.)	<b>16,384/32,768</b>	<b>16,384/32,768</b>
Max number of static routes	<b>10,240</b>	<b>10,240</b>
High availability	<b>Active-Passive</b>	<b>Active-Passive</b>

<sup>1</sup> Performance is measured in a laboratory environment under ideal conditions for version 5.x. Results may vary depending on test conditions and software version.

HARDWARE	2200	3200
Storage	<b>240 GB SSD (hot swappable - RAID 1)</b>	
Large Storage for local storage	<b>960 Go SSD (option Big Data - RAID 1)</b>	
Log partition	<b>&gt; 200 Go</b>	
MTBF at 25°C	<b>39.8 years</b>	
Size	<b>1U -19"</b>	
Height x Width x Depth (mm)	<b>44.45 x 443 x 610</b>	
Weight	<b>9.93 kg (21.9 lbs)</b>	
Power supply	<b>AC: 2x 100-240V 60-50Hz 6-3A DC (optional): 2 x -36 – -72VDC 17-9 A</b>	
Redundant power supply	<b>Yes (hot-swappable)</b>	
Power consumption (idle/avg in Watt)	<b>69/124/170</b>	
Fans	<b>5 (hot-swappable)</b>	
Noise level	<b>85 dBA</b>	
Thermal dissipation (idle/avg/max in BTU/h)	<b>235/423/580</b>	
Operating environment	Temperature: <b>0° to 40°C (32° to 104°F)</b> Humidity: <b>0% to 95% @ 40°C (104°F)</b>	
Storage environment	Temperature: <b>-30° to 65 °C (-22° to 149 °F)</b> Humidity: <b>5% to 95% @ 60°C (140°F)</b>	
CERTIFICATIONS	2200	3200
Compliance	<b>CE/FCC/RCM/UKCA/CB</b>	
Certifications	<b>EAL4+, Qualification Standard, Producto CCN Aprobado &amp; Cualificado, IEC-62443-4-1</b>	



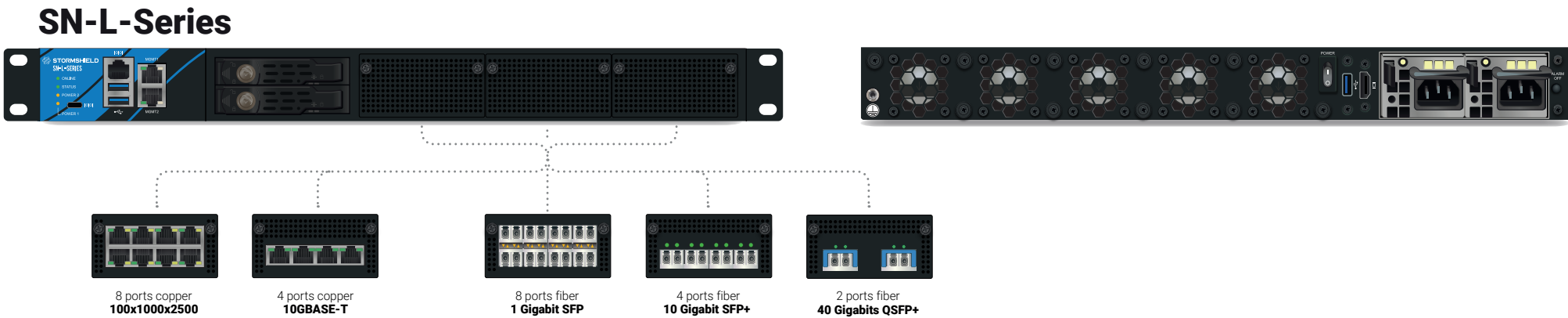
# EXTENSION MODULES

TYPE	EXTENSION MODULE	Nb	REFERENCE
Fiber	1 Gigabit SFP	8 ports	NC-1-8xG-FIB-SFP
Fiber	10 Gigabit SFP+	4 ports	NC-1-4x10G-F-SFP-P
Fiber	40 Gigabit QSFP+	2 ports	NC-1-2x40G-QSFP-P

1: Requires firmware version 4.8.1 and higher

TYPE	EXTENSION MODULE	Nb	REFERENCE
Copper	100x1000x2500	8 ports	NC-1-8x2_5G-C
Copper	10GBASE-T	4 ports	NC-1-4x10G-COP

1: Requires firmware version 4.8.1 and higher



# SERVICE PACKS

## ESSENTIAL SECURITY PACK

Corporations seeking unified protection from threats conveyed by the web or electronic mail and wishing to closely monitor the online activity of their users would find it advantageous to subscribe to this pack. They would then benefit from Stormshield Network Security's unique intrusion prevention technology, an advanced antispam engine, an antivirus module to detect malicious programs and web filtering engine for defining an internet access policy.

## PREMIUM SECURITY PACK

This pack focuses on corporations with stringent security requirements, by **providing the best technology for countering even the most sophisticated attacks. Advanced antimalware system with emulation technology and URL filtering in cloud mode based on 65 categories (Extended Web Control)** will raise your protection to a level that is unrivalled on the market. The Stormshield Network Security module offers real-time visibility over network or application vulnerabilities that affect workstations and servers on the information system.

### Next-Generation Firewall

Layer 7 Firewall	✓
Geolocation	✓
Web applications	✓
User authentication, MFA & SSO	✓

### Secure SD-WAN & ZTNA

IPsec VPN gateway	✓
Postquantum encryption	✓
SSL VPN gateway & client	✓
Device posture assessment	✓

### Threat Protection

IPS/IDS	✓
Trusted public certificates	✓
Antispam	✓
Threat intelligence (IP & domains)	✓
Extended Web Control (URL filtering)	Option
Antimalware	Option
Breach Fighter AI-powered sandboxing	Option
Industrial protocols DPI	Option

### Services

Software maintenance	✓
Hardware maintenance	✓
Standard support access	✓
Automated configuration backup	✓
24x7 technical support access	Option
Express exchange	Option
Secure return	Option

### Essential Security Pack

### Premium Security Pack

## HARDWARE EXCHANGE

All security packs include hardware maintenance in order to ensure business continuity in the event of a hardware failure. Your appliance will simply be exchanged for a similar replacement product. Three levels of service are available.

### Standard exchange

Your appliance will be exchanged once our customer service center receives the defective appliance.

### Express exchange

Your appliance will be exchanged in advance. As soon as our support centers diagnose a hardware failure, the replacement product will be sent, which you would receive the next working day<sup>1</sup>.

### Serenity4all

With this service, you replace the product yourself once our support centers have diagnosed the malfunction fault<sup>2</sup>.

<sup>1</sup> Please check with us regarding the eligible countries and cities. Applies to diagnoses made before 1 p.m.

<sup>2</sup> Replacement products must be acquired in advance for this service.



# FOR OPTIMAL PROTECTION

**Stormshield offers options to cover your additional cybersecurity needs.**

**Neutralize the most sophisticated threats** with Stormshield Network Advanced Antivirus.

**Benefit from an advanced and reliable filtering solution** with Stormshield Extended Web Control.

**Expand your home office** with highly secure remote access with Stormshield VPN Client.

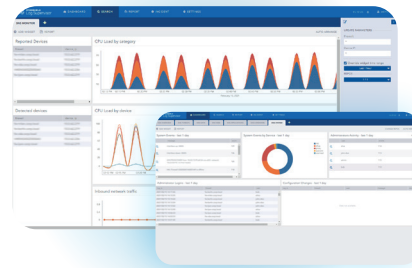
## ANY DOUBTS ABOUT THE ATTACHMENTS



Stop risking the security of your infrastructure with a dubious attachment and put it to the test with Stormshield Breach Fighter.

→ [breachfighter.stormshieldcs.eu](https://breachfighter.stormshieldcs.eu)

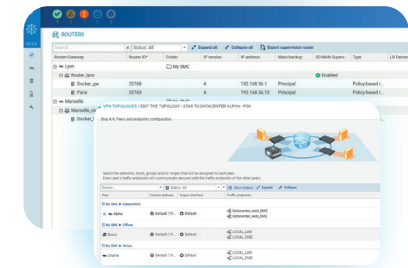
# MANAGE YOUR SECURITY WITH EFFICIENT TOOLS



## A decision-making tool

with Stormshield Log Supervisor

**Optimize your research tasks and incident response.** And thanks to its quick overview of system effectiveness, you will have peace of mind knowing your security investments are worthwhile.



## Management of large infrastructures

with Stormshield Management Center

**Stormshield Management Center exchanges SNS firewalls configuration and monitoring data in real time, while ensuring their confidentiality and integrity.** Its intuitive graphical interface minimizes configuration errors and its global management of security and filtering policies eliminates repetitive tasks.

# THE **EUROPEAN** **CHOICE** IN **CYBERSECURITY**

[www.stormshield.com](https://www.stormshield.com)