



STORMSHIELD

SN-XS-SERIES

170

Up to 8.5 Gbps

FIREWALL PERFORMANCE

Up to 1.8 Gbps

VPN PERFORMANCE

SDWAN

SMALL BRANCHES

NETWORK SECURITY



UNIFIED SECURITY, SUITED TO ALL ENVIRONMENTS



The best in unified security

Protecting your infrastructure, controlling access to applications and securing your employees' web browsing: it adds up to optimum network protection for VSEs.

The SDWAN solution for branches

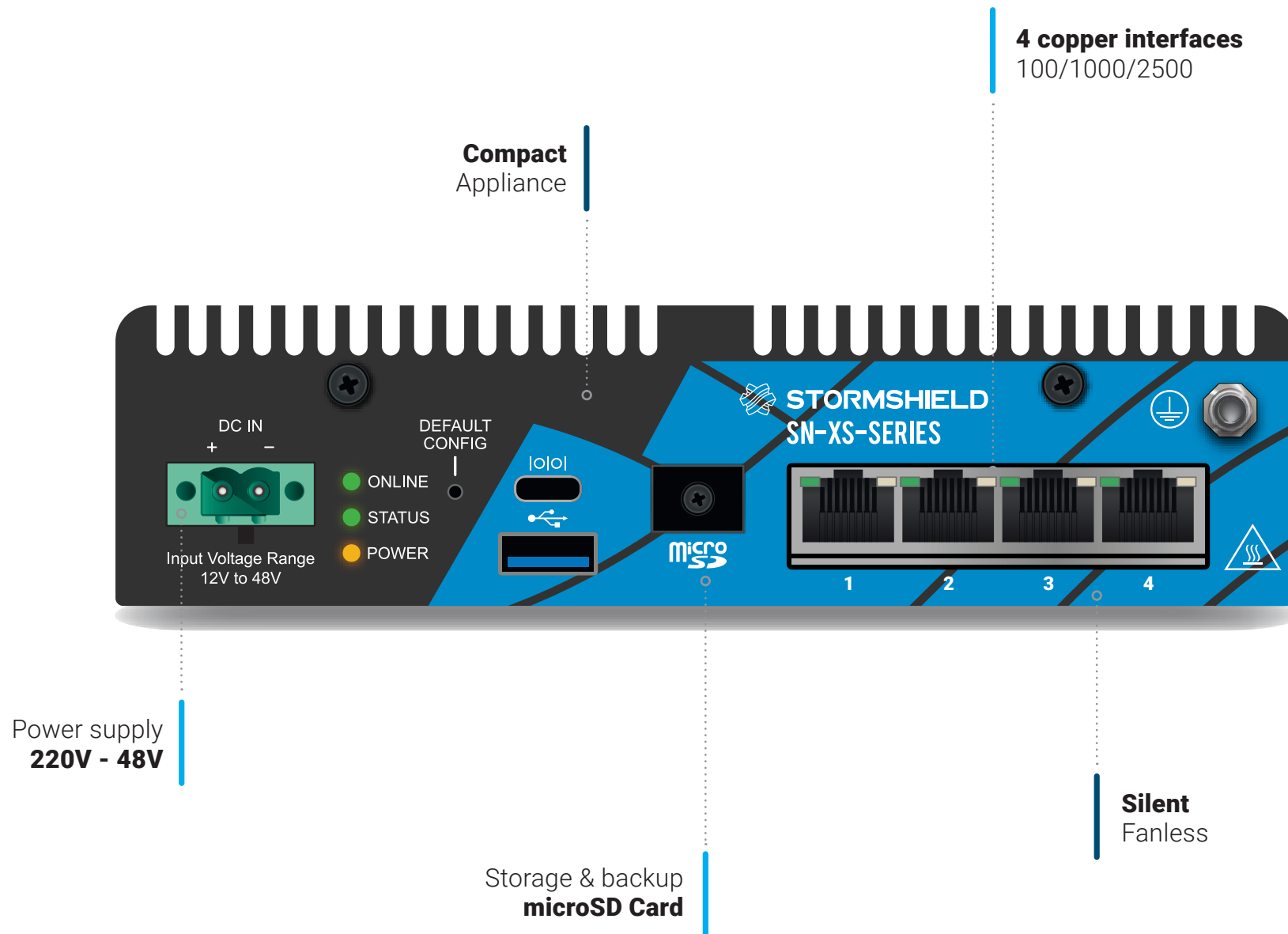
Automated secure interconnections for your extended infrastructure ensure that your employees have trusted access to company resources.

Ease of deployment

The various deployment modes within your network (router, transparent and hybrid) are among the most flexible on the market, ensuring greater flexibility for integrating firewalls while still providing these security functions.

FOR EUROPEAN CYBERSECURITY

When you choose Stormshield, you gain true strategic independence and peace of mind in a highly charged geopolitical context. Completely developed in France, our firmware has received certification from leading European cybersecurity agencies such as ANSSI (France) and CCN (Spain), as well as Standard Qualification.



ESSENTIAL DATA



Copper connectivity

4

Copper interfaces 2.5GbE



Rugged
Compact

Format

SN-XS-Series

170



Performance

8.5 Gbps

Firewall



VPN

1.8 Gbps

IPsec throughput



Performance

2.5 Gbps

Firewall (IMIX)



VPN

200

IPsec tunnels



FEATURES

Non-contractual document. The features mentioned are for version 4.x.

SDWAN

Automatic interconnection management, dynamic link selection and easy bandwidth management enable your staff to **access company resources with confidence.**

Unified security

Optimum network protection for VSEs with the **most comprehensive set of security functions on the market:** firewall, intrusion prevention, application control, VPN, antivirus, antispam, web filtering, etc.

Seamless network integration

The various deployment modes within your network (router, transparent and hybrid) are among the most flexible on the market. They ensure **seamless integration of the firewall into your existing network architecture.**

... and unique firmware

Stormshield offers a unique, ergonomic interface for managing its products range. This **reduces operating costs, facilitates the management** of IT teams and **saves time** for the company.

And more features

Usage control

Firewall/IPS/IDS mode • Identity-based firewall • Application detection and management • Microsoft Services Firewall • Industrial firewall/IPS/IDS • Industrial application control • Detection and control of the use of mobile terminals • Geolocation (countries, continents) • Dynamic Host Reputation • URL filtering (embedded database or cloud mode) • Transparent authentication (Active Directory, SSO Agent, SSL) • Agent-based multi-user VDI authentication (Citrix, TSE) • Guest and sponsorship mode authentication, webservices • Host Checker • Zero Trust Network Access (ZTNA)

Protection from threats

Intrusion detection and prevention • Protocols autodetection and compliancy check • Application inspection • Protection from denial of service attacks (DoS) • Protection from SQL injections • Protection from Cross-Site Scripting (XSS) • Protection from malicious Web2.0 code and scripts (Clean & Pass) • Trojan detection • Detection of interactive connections (botnets, Command & Control) • Protection from data evasion • Advanced management of fragmentation • Automatic reaction to attack (notification, quarantine, block, QOS, dump) • Antispam and antiphishing: reputation-based analysis, heuristic engine • Embedded antivirus (HTTP, SMTP, POP3, FTP) • SSL decryption and inspection • VoIP protection (SIP) • Collaborative security: IP reputation, Cloud based Sandbox on the European territory (option)

Confidentiality

Site-to-site or nomad IPsec VPN • Post Quantum Resistant • Remote SSL VPN access in multi-OS tunnel mode (Windows, Android, iOS, etc.) • SSL VPN agent with automatic configuration (Windows) • Support for Android/iPhone IPsec VPN

Network - Integration

IPv6 • NAT, PAT, transparent (bridge)/routed/hybrid modes • Dynamic routing (RIP - OSPF - BGP) • Multicast • Multiple link management (balancing, failover) • Multi-level internal or external PKI management • Multi-domain authentication (including internal LDAP) • Policy-based routing (PBR) • QoS management • DHCP client/relay/server • NTP client • DNS proxy-cache • HTTP proxy • Aggregate links (LACP, Broadcast Mode and Redundancy) • Spanning-tree management (RSTP/MSTP) • SD-WAN, Multifactor Authentication (MFA)

Management

Web-based management • Interface with privacy mode (GDPR compliancy) • Object-oriented security policy • Contextual security policy • Real-time configuration helper • Rule counter • Connected or disconnected security updates • Global/local security policy • Embedded log reporting and analysis tools • Interactive and customizable reports • Support for multiple syslog server UDP/TCP/TLS • SNMP v2, v3 agent • IPFIX • Automated configuration backup • External storage (option) • Open API • Script recording • High availability.

TECHNICAL SPECIFICATIONS

PERFORMANCE ¹	170
Firewall throughput (1518 byte UDP)	8.5 Gbps
Firewall throughput (IMIX)	2.4 Gbps
IPS throughput (1518 byte UDP)	4 Gbps
IPS throughput (IMIX)	1.1 Gbps
Threat protection*	400 Mbps

* Threat protection is measured with firewall, IPS, antivirus, IP reputation, and web application security enabled, using a realistic traffic mix, and with logging enabled.

VPN	170
IPsec throughput - AES-GCM (1408 bytes)	1.8 Gbps
IPsec - AES-GCM (IMIX)	850 Mbps
Nb of IPsec VPN tunnels (1024 kbps per tunnel)	200
Nb of SSL VPN clients	200

NETWORK CONNECTIVITY	170
Max number of simultaneous sessions	150,000
Nb of new sessions/sec.	25,000
Nb of main gateways (max) / backup (max)	64/64

CONNECTIVITY	170
Nb of copper interfaces	4

SYSTEM	170
Nb of filtering rules (recommended / specific config.)	1,024 / 2,048
Max number of static routes	512
Max number of dynamic routes	10,000
High availability	Active-Passive

¹ Performance is measured in a laboratory environment under ideal conditions for version 5.x. Results may vary depending on test conditions and software version.

HARDWARE	170
Log partition	microSD card
MTBF at 25°C	50.1 years
Installation	Rack, cabinet, wall mount or DIN rail (width 35 mm, EN 50022 standard)
Size	Desktop 1U (<1/2 19")
Height x Width x Depth (mm)	42 x 165 x 139 (46 w/ rubber feet)
Weight	1.16 kg (2.56 lbs)
Power supply	AC: 100-240V 60-50Hz 1.2A max DC: 12-48VDC 3-0.75A
Power consumption (idle/avg in Watt)	9 / 10 / 19,9
Noise level	Fanless
Thermal dissipation (idle/avg/max in BTU/h)	31 / 34 / 80
Operating environment	Temperature: -20° to 60°C (-4° to 140°F) Humidity: 0% to 95% @ 60°C (140°F)
Storage environment	Temperature: -40° to 85°C (-40° to 185°F) Humidity: 0% to 95% @ 60°C (140°F)

CERTIFICATIONS	170
Compliance	CE/FCC/RCM/UKCA/ IEC 61000-4-12/CB/ IEC 60068-2
Certifications	EAL4+, Qualification Standard, Producto CCN Aprobado & Cualificado, IEC-62443-4-1

SERVICE PACKS

ESSENTIAL SECURITY PACK

Corporations seeking unified protection from threats conveyed by the web or electronic mail and wishing to closely monitor the online activity of their users would find it advantageous to subscribe to this pack. They would then benefit from Stormshield Network Security's unique intrusion prevention technology, an advanced antispam engine, an antivirus module to detect malicious programs and web filtering engine for defining an internet access policy.

PREMIUM SECURITY PACK

This pack focuses on corporations with stringent security requirements, by **providing the best technology for countering even the most sophisticated attacks. Advanced antimalware system with emulation technology and URL filtering in cloud mode based on 65 categories (Extended Web Control)** will raise your protection to a level that is unrivalled on the market. The Stormshield Network Security module offers real-time visibility over network or application vulnerabilities that affect workstations and servers on the information system.

Next-Generation Firewall

- Layer 7 Firewall
- Geolocation
- Web applications
- User authentication, MFA & SSO

Secure SD-WAN & ZTNA

- IPsec VPN gateway
- Postquantum encryption
- SSL VPN gateway & client
- Device posture assessment

Threat Protection

- IPS/IDS
- Trusted public certificates
- Antispam
- Threat intelligence (IP & domains)
- Extended Web Control (URL filtering)
- Antimalware
- Breach Fighter AI-powered sandboxing
- Industrial protocols DPI

Services

- Software maintenance
- Hardware maintenance
- Standard support access
- Automated configuration backup
- 24x7 technical support access
- Express exchange
- Secure return

Essential Security Pack

- ✓
- ✓
- ✓
- ✓
- ✓
- ✓
- ✓
- ✓
- ✓
- ✓
- ✓
- ✓
- ✓
- Option
- Option
- Option
- Option
- Option
- Option
- Option
- Option
- Option

Premium Security Pack

- ✓
- ✓
- ✓
- ✓
- ✓
- ✓
- ✓
- ✓
- ✓
- ✓
- ✓
- ✓
- ✓
- ✓
- ✓
- ✓
- ✓
- ✓
- ✓
- ✓

HARDWARE EXCHANGE

All security packs include hardware maintenance in order to ensure business continuity in the event of a hardware failure. Your appliance will simply be exchanged for a similar replacement product. Three levels of service are available.

Standard exchange

Your appliance will be exchanged once our customer service center receives the defective appliance.

Express exchange

Your appliance will be exchanged in advance. As soon as our support centers diagnose a hardware failure, the replacement product will be sent, which you would receive the next working day¹.

Serenity4all

With this service, you replace the product yourself once our support centers have diagnosed the malfunction fault².

¹ Please check with us regarding the eligible countries and cities. Applies to diagnoses made before 1 p.m.

² Replacement products must be acquired in advance for this service.

FOR OPTIMAL PROTECTION

Stormshield offers options to cover your additional cybersecurity needs.

Neutralize the most sophisticated threats with Stormshield Network Advanced Antivirus.

Benefit from an advanced and reliable filtering solution with Stormshield Extended Web Control.

Expand your home office with highly secure remote access with Stormshield VPN Client.

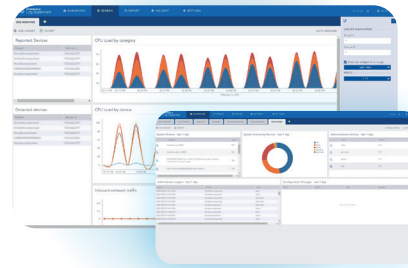
ANY DOUBTS ABOUT THE ATTACHMENTS



Stop risking the security of your infrastructure with a dubious attachment and put it to the test with Stormshield Breach Fighter.

→ breachfighter.stormshieldcs.eu

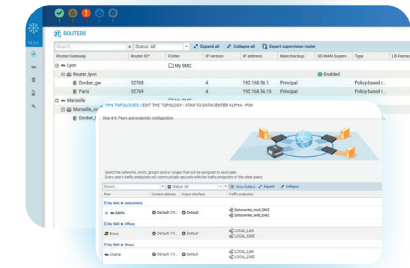
MANAGE YOUR SECURITY WITH EFFICIENT TOOLS



A decision-making tool

with Stormshield Log Supervisor

Optimize your research tasks and incident response. And thanks to its quick overview of system effectiveness, you will have peace of mind knowing your security investments are worthwhile.



Management of large infrastructures

with Stormshield Management Center

Stormshield Management Center exchanges SNS firewalls configuration and monitoring data in real time, while ensuring their confidentiality and integrity. Its intuitive graphical interface minimizes configuration errors and its global management of security and filtering policies eliminates repetitive tasks.

THE **EUROPEAN** **CHOICE** IN **CYBERSECURITY**

www.stormshield.com