



STORMSHIELD

SN1100

Up to 59.4 Gbps

FIREWALL PERFORMANCE

Up to 13.4 Gbps

VPN PERFORMANCE

Resilience

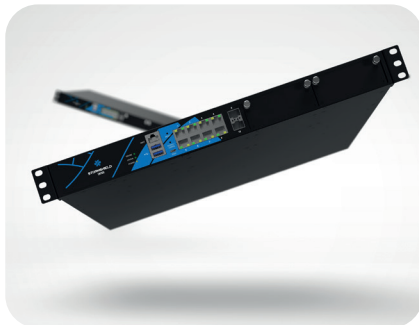
COMPLEX INFRASTRUCTURES

NETWORK SECURITY



POWER AND RESILIENCE

FOR COMPLEX
INFRASTRUCTURES



Resilience of complex infrastructures

High availability, redundant power supply and link aggregation functions enable you to build a complex, resilient architecture.

Tailored protection at the heart of your network

25 Gbps fiber interfaces and network segmentation functions deliver a high-performance solution for protecting the core of your infrastructure.

Network modularity

The modularity of the network, with the ability to mix copper and fiber interfaces (1 GbE, 2.5 GbE, 10 GbE and 25 GbE), adapting perfectly to your infrastructure – both now and in future.

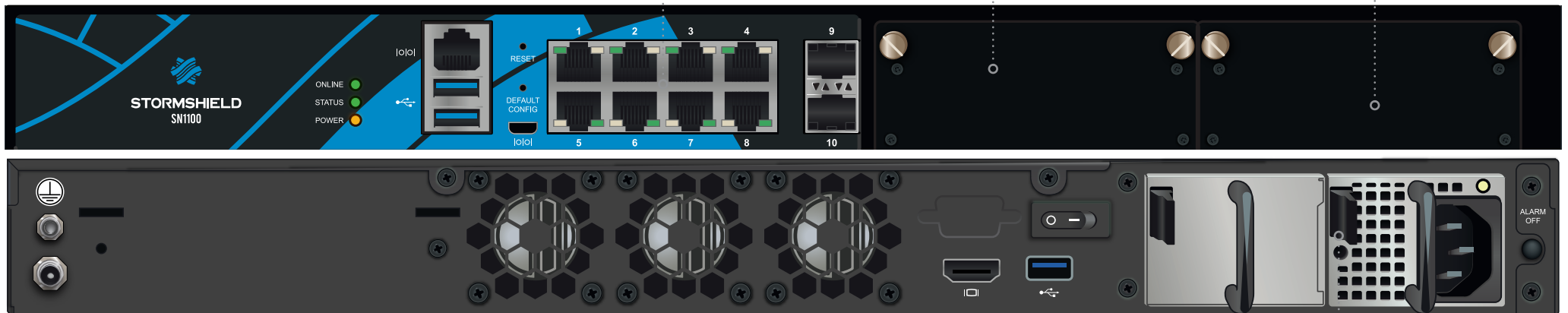
FOR EUROPEAN CYBERSECURITY

When you choose Stormshield, you gain true strategic independence and peace of mind in a highly charged geopolitical context. Completely developed in France, our firmware has received certification from leading European cybersecurity agencies such as ANSSI (France) and CCN (Spain), as well as Standard Qualification.

8 copper interfaces
10/100/1000

2 fiber interfaces
10 Gb

2 extensions
Copper and fiber modularity
(1Gb/10Gb)



Hot-swappable
redundant power supply

ESSENTIAL DATA



Copper connectivity

8

Copper interfaces



Network extension

Modularity

2 slots

(1 GbE, 2.5 GbE, 10 GbE et 25 GbE)

SN1100



Performance

59.4 Gbps

Firewall



VPN

13.4 Gbps

IPsec throughput



Performance

30.7 Gbps

Firewall (IMIX)



Threat Prevention

6.7 Gbps

Throughput



FEATURES

Non-contractual document. The features mentioned are for version 4.x.

Resilient complex infrastructures

The LACP and MSP/RSTP functions, coupled with high availability and redundant power supply, ensure **resilience for complex architecture**.

Core network protection

Network segmentation functions such as filtering and routing, coupled with a choice of interface (copper or fiber), deliver the ideal performance solution for protecting your core network.

Network modularity

A choice of **copper (1 GbE, 2.5 GbE and 10 GbE) or fiber (1 GbE, 10 GbE and 25 GbE) network interfaces** ensures a perfect fit with your infrastructure.

... and unique firmware

Stormshield offers a unique, ergonomic interface for managing its products range. This **reduces operating costs, facilitates the management** of IT teams and **saves time** for the company.

And more features

Usage control

Firewall/IPS/IDS mode • Identity-based firewall • Application detection and management • Microsoft Services Firewall • Industrial firewall/IPS/IDS • Industrial application control • Detection and control of the use of mobile terminals • Geolocation (countries, continents) • Dynamic Host Reputation • URL filtering (embedded database or cloud mode) • Transparent authentication (Active Directory, SSO Agent, SSL) • Agent-based multi-user VDI authentication (Citrix, TSE) • Guest and sponsorship mode authentication, webservices • Host Checker • Zero Trust Network Access (ZTNA)

Protection from threats

Intrusion detection and prevention • Protocols autodetection and compliancy check • Application inspection • Protection from denial of service attacks (DoS) • Protection from SQL injections • Protection from Cross-Site Scripting (XSS) • Protection from malicious Web2.0 code and scripts (Clean & Pass) • Trojan detection • Detection of interactive connections (botnets, Command & Control) • Protection from data evasion • Advanced management of fragmentation • Automatic reaction to attack (notification, quarantine, block, QOS, dump) • Antispam and antiphishing: reputation-based analysis, heuristic engine • Embedded antivirus (HTTP, SMTP, POP3, FTP) • SSL decryption and inspection • VoIP protection (SIP) • Collaborative security: IP reputation, Cloud based Sandbox on the European territory (option)

Confidentiality

Site-to-site or nomad IPsec VPN • Post Quantum Resistant • Remote SSL VPN access in multi-OS tunnel mode (Windows, Android, iOS, etc.) • SSL VPN agent with automatic configuration (Windows) • Support for Android/iPhone IPsec VPN

Network - Integration

IPv6 • NAT, PAT, transparent (bridge)/routed/hybrid modes • Dynamic routing (RIP - OSPF - BGP) • Multicast • Multiple link management (balancing, failover) • Multi-level internal or external PKI management • Multi-domain authentication (including internal LDAP) • Policy-based routing (PBR) • QoS management • DHCP client/relay/server • NTP client • DNS proxy-cache • HTTP proxy • Aggregate links (LACP, Broadcast Mode and Redundancy) • Spanning-tree management (RSTP/MSTP) • SD-WAN, Multifactor Authentication (MFA)

Management

Web-based management • Interface with privacy mode (GDPR compliancy) • Object-oriented security policy • Contextual security policy • Real-time configuration helper • Rule counter • Connected or disconnected security updates • Global/local security policy • Embedded log reporting and analysis tools • Interactive and customizable reports • Support for multiple syslog server UDP/TCP/TLS • SNMP v2, v3 agent • IPFIX • Automated configuration backup • External storage (option) • Open API • Script recording • High availability.

| PERFORMANCE ¹ | SN1100 |
|--------------------------------------|------------------|
| Firewall throughput (1518 bytes UDP) | 59.4 Gbps |
| Firewall throughput (IMIX) | 30.7 Gbps |
| IPS throughput (1518 bytes UDP) | 48.3 Gbps |
| IPS throughput (IMIX) | 14 Gbps |
| Threat protection* | 6.7 Gbps |

* Threat protection is measured with firewall, IPS, antivirus, IP reputation, and web application security enabled, using a realistic traffic mix, and with logging enabled.

| VPN | SN1100 |
|--|------------------|
| IPsec throughput - AES-GCM (1408 bytes UDP) | 13.4 Gbps |
| IPsec throughput - AES-GCM (IMIX) | 6.6 Gbps |
| Nb of IPsec VPN tunnels (1024 kbps per tunnel) | 4,700 |
| Nb of SSL VPN clients | 1,600 |

| NETWORK CONNECTIVITY | SN1100 |
|---|------------------|
| Max number of simultaneous sessions (TCP) | 1,800,000 |
| Nb of new sessions/sec. | 250,000 |
| Nb of main gateways (max)/backup (max) | 64/64 |

| CONNECTIVITY | SN1100 |
|---------------------------------------|-------------|
| Interfaces 10/100/1000 | 8-24 |
| Copper interfaces 10 Gb | 0-8 |
| Fiber interfaces 1 Gb | 0-16 |
| Fiber interfaces 1/10 Gb (dual speed) | 2-10 |
| Fiber interfaces 25 Gb | 0-4 |
| Slot for extension modules | 2 |

| SYSTEM | SN1100 |
|--|-----------------------|
| Nb of filtering rules (recommended/specific config.) | 8,192/32,768 |
| Max number of static routes | 7,680 |
| High availability | Active-Passive |

¹ Performance is measured in a laboratory environment under ideal conditions for version 5.x. Results may vary depending on test conditions and software version.

TECHNICAL SPECIFICATIONS

| HARDWARE | SN1100 |
|---|--|
| Storage | > 400 GB SSD |
| MTBF at 25°C | 27.3 years |
| Size | 1U -19" |
| Height x Width x Depth (mm) | 44.45 x 440 x 540 |
| Weight | 8.11 kg (17.88 lbs) |
| Power supply | AC: 100-240V 60-50Hz 5A-3A DC (optional): -36 -- -72VDC 12-6 A |
| Redundant power supply | Option (hot-swappable) |
| Power consumption (idle/avg/max) | 52/112/144 |
| Fans | 3 (hot-swappable) |
| Noise level | 65 dBA |
| Thermal dissipation (idle/avg/max in BTU/h) | 177/382/491 |
| Operating environment | Temperature: 0° to 40°C (32° to 104°F) Humidity: 0% to 95% @ 40°C (104°F) |
| Storage environment | Temperature: -30° to 65 °C (-22° to 149 °F) Humidity: 5% to 95% @ 60°C (140°F) |
| CERTIFICATIONS | SN1100 |
| Compliance | CE/FCC/CB |
| Certifications | EAL4+, Qualification Standard, Producto CCN Aprobado & Cualificado, IEC-62443-4-1 |

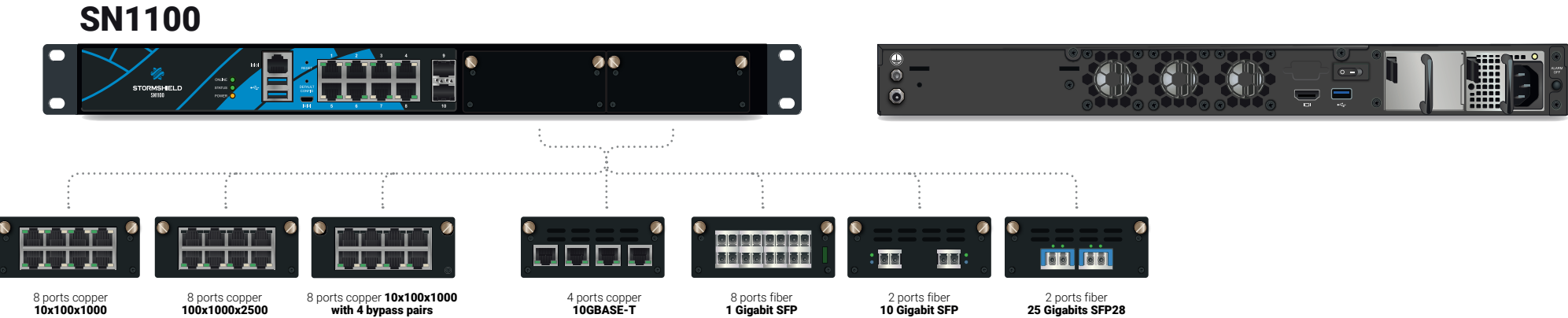
EXTENSION
MODULES

| TYPE | EXTENSION MODULE | Nb | REFERENCE |
|-------|------------------|---------|---------------------------------|
| Fiber | 1 Gigabit SFP | 8 ports | NA-EX-CARD-8xG-FIB |
| Fiber | 10 Gigabit SFP+ | 4 ports | NA-NW-CARD-4x10G-F |
| Fiber | 25 Gigabit SFP28 | 2 ports | NA-EX-CARD-2x25G-F ¹ |

| TYPE | EXTENSION MODULE | Nb | REFERENCE |
|--------|---------------------------------|---------|----------------------------------|
| Copper | 10x100x1000 | 8 ports | NA-EX-CARD-8xG-COP |
| Copper | 10x100x1000 with 4 bypass pairs | 8 ports | NA-EX-CARD-BP-8xG-C ¹ |
| Copper | 100x1000x2500 | 8 ports | NA-EX-CARD-8x2_5G-C ² |
| Copper | 10GBASE-T | 4 ports | NA-EX-CARD-4x10G-COP |

1: Requires firmware version 4.8.1 and higher
2: Requires BIOS R1.01

| TYPE | ON-BOARD INTERFACE CONNECTORS | REFERENCE |
|-------|---|---------------------|
| Fiber | Dual Speed 1G/10Gigabit-SR/SX SFP+ (short distance) | NA-TRANS-DUALSFP-SR |
| Fiber | Dual Speed 1G/10Gigabit-LR/LX SFP+ (long distance) | NA-TRANS-DUALSFP-LR |



SERVICE PACKS

ESSENTIAL SECURITY PACK

Corporations seeking unified protection from threats conveyed by the web or electronic mail and wishing to closely monitor the online activity of their users would find it advantageous to subscribe to this pack. They would then benefit from Stormshield Network Security's unique intrusion prevention technology, an advanced antispam engine, an antivirus module to detect malicious programs and web filtering engine for defining an internet access policy.

PREMIUM SECURITY PACK

This pack focuses on corporations with stringent security requirements, by **providing the best technology for countering even the most sophisticated attacks. Advanced antimalware system with emulation technology and URL filtering in cloud mode based on 65 categories (Extended Web Control)** will raise your protection to a level that is unrivalled on the market. The Stormshield Network Security module offers real-time visibility over network or application vulnerabilities that affect workstations and servers on the information system.

Next-Generation Firewall

| | |
|--------------------------------|---|
| Layer 7 Firewall | ✓ |
| Geolocation | ✓ |
| Web applications | ✓ |
| User authentication, MFA & SSO | ✓ |

Secure SD-WAN & ZTNA

| | |
|---------------------------|---|
| IPsec VPN gateway | ✓ |
| Postquantum encryption | ✓ |
| SSL VPN gateway & client | ✓ |
| Device posture assessment | ✓ |

Threat Protection

| | |
|--------------------------------------|--------|
| IPS/IDS | ✓ |
| Trusted public certificates | ✓ |
| Antispam | ✓ |
| Threat intelligence (IP & domains) | ✓ |
| Extended Web Control (URL filtering) | Option |
| Antimalware | Option |
| Breach Fighter AI-powered sandboxing | Option |
| Industrial protocols DPI | Option |

Services

| | |
|--------------------------------|--------|
| Software maintenance | ✓ |
| Hardware maintenance | ✓ |
| Standard support access | ✓ |
| Automated configuration backup | ✓ |
| 24x7 technical support access | Option |
| Express exchange | Option |
| Secure return | Option |

Essential Security Pack

Premium Security Pack

HARDWARE EXCHANGE

All security packs include hardware maintenance in order to ensure business continuity in the event of a hardware failure. Your appliance will simply be exchanged for a similar replacement product. Three levels of service are available.

Standard exchange

Your appliance will be exchanged once our customer service center receives the defective appliance.

Express exchange

Your appliance will be exchanged in advance. As soon as our support centers diagnose a hardware failure, the replacement product will be sent, which you would receive the next working day¹.

Serenity4all

With this service, you replace the product yourself once our support centers have diagnosed the malfunction fault².

¹ Please check with us regarding the eligible countries and cities. Applies to diagnoses made before 1 p.m.

² Replacement products must be acquired in advance for this service.

FOR OPTIMAL PROTECTION

Stormshield offers options to cover your additional cybersecurity needs.

Neutralize the most sophisticated threats with Stormshield Network Advanced Antivirus.

Benefit from an advanced and reliable filtering solution with Stormshield Extended Web Control.

Expand your home office with highly secure remote access with Stormshield VPN Client.

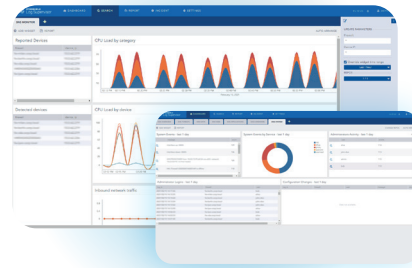
ANY DOUBTS ABOUT THE ATTACHMENTS



Stop risking the security of your infrastructure with a dubious attachment and put it to the test with Stormshield Breach Fighter.

→ breachfighter.stormshieldcs.eu

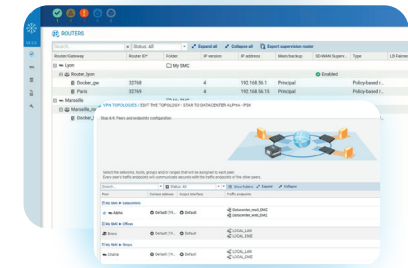
MANAGE YOUR SECURITY WITH EFFICIENT TOOLS



A decision-making tool

with Stormshield Log Supervisor

Optimize your research tasks and incident response. And thanks to its quick overview of system effectiveness, you will have peace of mind knowing your security investments are worthwhile.



Management of large infrastructures

with Stormshield Management Center

Stormshield Management Center exchanges SNS firewalls configuration and monitoring data in real time, while ensuring their confidentiality and integrity. Its intuitive graphical interface minimizes configuration errors and its global management of security and filtering policies eliminates repetitive tasks.

THE **EUROPEAN** **CHOICE** IN **CYBERSECURITY**

www.stormshield.com